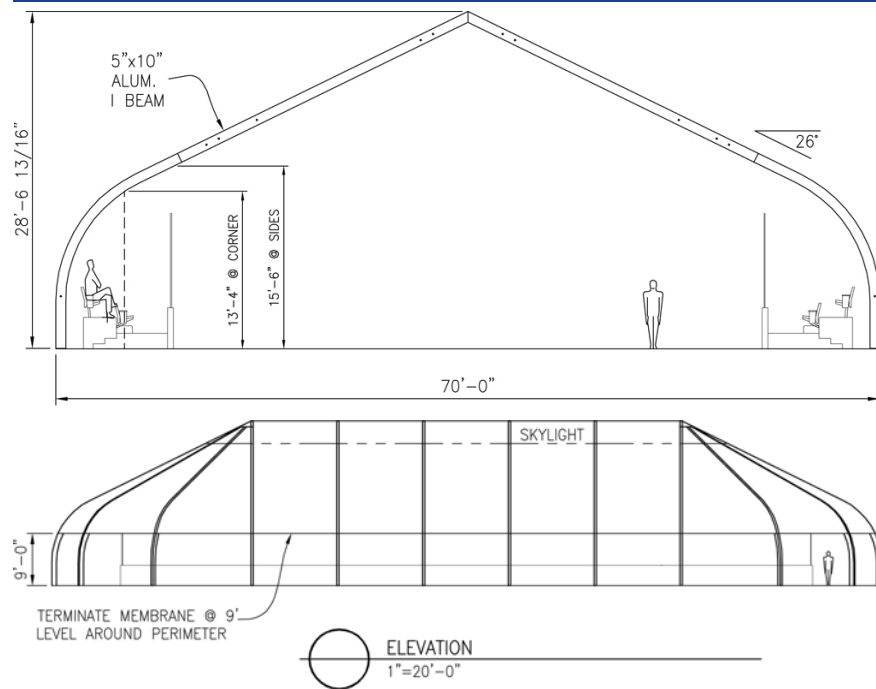


Multi-recreational, Flexible & Economical



Geo-Dome Components

Pick and choose various available options to customize the Geo-Dome complex design.

Custom Options:

- Ice-plant with geothermal mechanical system
- Energy efficient arena lighting
- Heated team benches & penalty box
- Heated bleacher seating
- Heated change rooms
- Nets, boards, scoreboard
- Rubber flooring (skate/spectator areas)
- Covered corridors from Geo-Dome complex to existing building
- Dehumidification system
- Exterior colour and graphics
- Hard shell aluminum sheeting provides round-the-clock vandalism protection
- Foil-backed insulation blanket
- Artificial turf for summer activities

Simply Economical

Build a low cost dome-covered ice arena complex anywhere where cold weather nears 0° C or colder during winter months. This is a cost effective alternative to a normal covered building which has higher capital and operation costs.

- Cover and enhance an existing ice surface.
- Add to an existing facility to increase capacity and generate revenue.
- Build a new multi-purpose facility including dome cover, ice plant and permanent laser leveled concrete slab.

Ease of Construction

Within a few short months after signing approval, your facility will be ready to go. Due to available product inventory and a well-planned method of construction, you'll get on-time scheduling.

Recreational Solution

The eco-friendly Geo-Dome complex is a viable solution for communities to expand their recreational capability with a much lower capital budget. The cost per usage hours and days is unparamounted in this age of overbudget multi-million dollar projects.

SPORT MARKETING & PROGRAMMING: Expertise available to make your facility a profit centre. *"This facility brings community back into communities."* – JUNGLE JIM HUNTER

Financing Options

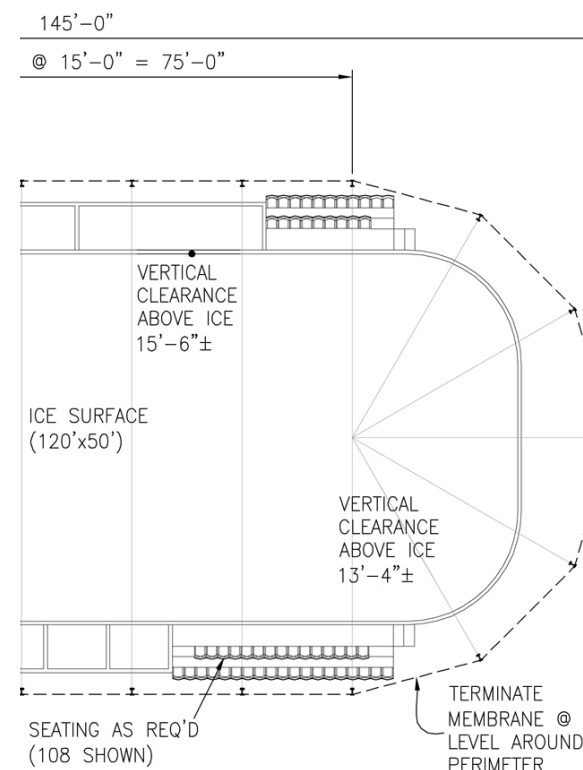
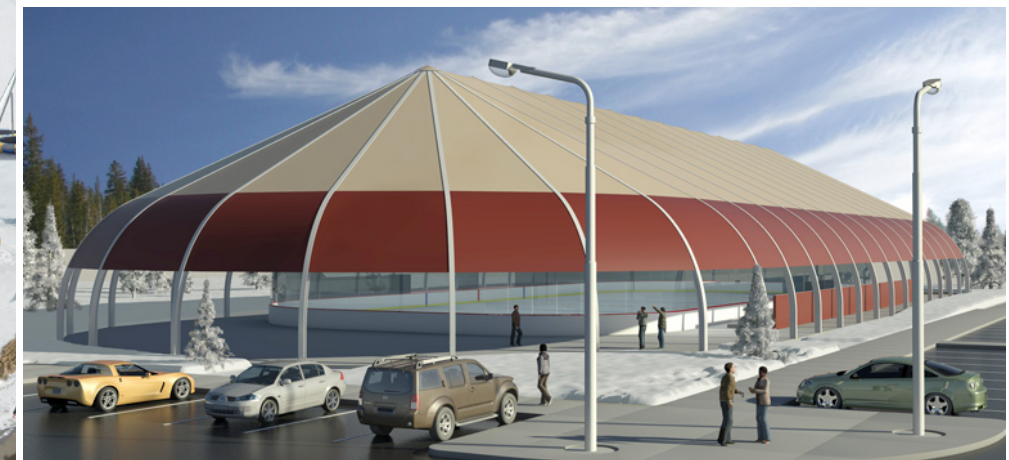
There is assistance available in financing potentially half the cost based on a positive feasibility study that we can undertake on your behalf.

gres

780-433-8702
www.gresworld.com



The Geo-Dome Community Rink



gres

An Innovative Year Round All-Weather Recreational Facility

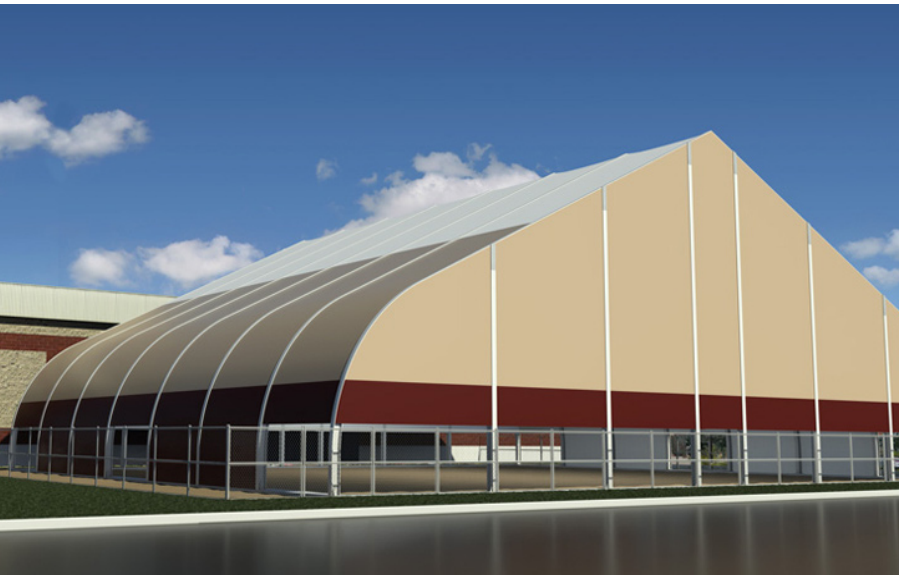
Whether the old outdoor rink needs a lift or a new one is in the plans, your community will benefit from our unique Geo-Dome Community Rink – a dome-covered complex with geothermal heat extraction that dramatically expands the level of recreational facilities by providing:

- Up to 5 - 6 months of smooth, consistent quality ice supporting skating, ice hockey, figure skating, ringette, broomball and other winter activities.... as much as a full winter season.
- Outdoor sports under the dome gets protected from harsh weather conditions with the capability to play soccer, lacrosse, ball hockey and more.... no rainchecks, play ball anytime!
- Community events such as large meetings, BBQs, block parties, farmer's markets, fitness classes, special events and occasions that provide comfort and peace-of-mind from the elements.

Quick Turnaround with Easy Installation & Construction

Snow, Rain, Wind & Sun Protection

All-Weather Dome, Efficient Lighting & Ice Plant



Dome Structure

- This unique concept exponentially increases the ice surface quality:
- all-weather dome structure covers the ice surface for great conditions
 - Sprung stressed membrane panels within a non-corroding aluminum substructure engineered to meet or exceed most building codes



Low Energy Lighting

- Energy saving lighting conditions during day and night hours:
- strategically located translucent skylight provides natural sunlight with protection from harmful rays
 - night time low energy and high efficiency overhead lights



Energy Efficient Ice Plant

- A brand new, energy efficient ice plant with state-of-the-art engineered piping:
- consistent, temperature-controlled quality ice with a level surface
 - geothermal heat transfer from ice to warm up benches, dressing rooms, bleachers and other areas
 - utilizes eco-friendly refrigerant with no ammonia usage

Green Energy – Canada's 1st Geo-Dome Community Rink

Comparison Analysis: Geo-Dome vs Outdoor Rink

Traditional Outdoor Rink

It's a Canadian rite of passage to enjoy a skate or a game of shinny outdoors in the winter. Kids and adults drop-in virtually any time. There's simply nothing like it.

PROS:

- Low cost operation
- Low maintenance
- Public accessibility
- Random shinny and skates
- Walkable distance to local rink

CONS:

- Short season, average 8 weeks
- Subject to winter conditions
- Ice quality varies pending temperature
- Snow, sleet, wind, rain cancels ice
- Little usage during spring and summer

Geo-Dome Complex

A eco-friendly, weather-proof dome along with revolutionary geothermal heat transfer to supplement consistent quality ice surface. This is really something to use year round.

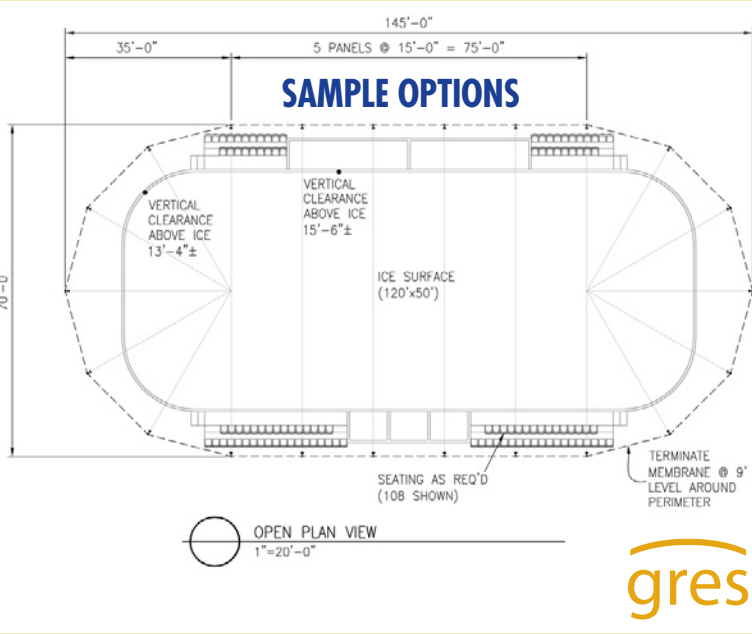
PROS:

- Year round usage, summer and winter
- Much lower cost than indoor arena
- All-weather protection from snow, sleet, rain, wind and sun
- Multipurpose recreational facility, host variety of community events
- up to 5 - 6 month ice season
- possible 6 - 7 month indoor sports usage

CONS:

- Costs a little more than outdoor rink
- More maintenance required

Comparison Analysis	Outdoor Rink	Geo-Dome Complex
Ice season (at least 8 weeks)	•	•
Ice season (up to 5 - 6 months)		•
All-weather protection		•
Winter & figure skating	•	•
Ice hockey, ringette, etc.	•	•
Summer sports		•
Community events		•
Walkable location	•	•
Low energy lighting		•
Temperature-controlled ice		•
Geothermal heat transfer		•
Broad year round usage		•



Enclosed Facility with Winter & Summer Usage Year-Round